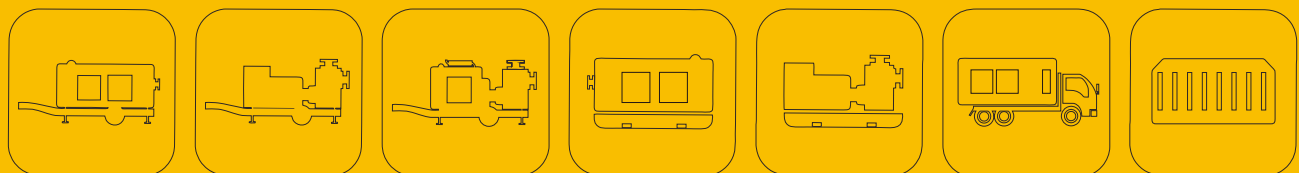




STANDING TALL ON SEVEN CONTINENTS



Diesel Pumps



STANDING TALL ON SEVEN CONTINENTS More Trusted By Users

Focus on Diesel Engine Pumps / Generator Set
/ Light Towers for 25 years

REALWIN[®]
MANUFACTURE





C Company Profiles

"Realwin " company was established in 2003, headquartered in Shanghai. It is a full-size manufacturing enterprise focusing on the research and development, production, sales and service of pump set, generator set, mobile light tower set and other products. In 2011, Realwin established a modern production base covering an area of about 30,000 square meters in Baima Modern High-tech Industrial Park (No. 8, Chaxing Road), Lishui District, Nanjing City, Jiangsu Province, which further strengthened the production guarantee of Realwin series products. For more than 20 years, Realwin has been focusing on the technical research and development and manufacturing of pump units, generator units, emergency drainage pump sets, emergency light tower and other equipment. At the same time, we provide Realwin high quality products and high quality services to users all over the world.

Realwin manufacture existing 10 series of products:**SV series**(Trailer type emergency sewage pump set), **PV series** (Emergency drainage pump), **MV series** (Trailer type multifunctional pump), **E series** (Permanent magnet frequency conversion submersible pump), **EV series** (Emergency drainage vehicle) ,**EX series** (Explosion-proof diesel pump unit) ,**CS series** (Container drainage pump station) , **AS series** (Automatic loading type drainage shelter) ,**MLT series** (Hydraulic /Manual mobile light tower) ,**FR series**(Trailer type fire rescue pump set) ,**GF series** (diesel generator set).The engines selected in the series products are: Cummins , Deutz , Weichai , Shanghai Chai, Yuchai and other international and domestic famous brand engines.The products manufactured by Realwin are widely used in remote fire water supply, fire rescue, emergency rescue, farmland irrigation, flood control and drainage, drought relief, emergency power generation, emergency light tower, sewage treatment, hydropower engineering and metallurgy, mining, petroleum, chemical industry, chemical fiber and other industries.

Realwin Factory has passed ISO9001 International Quality Management system certification, ISO14001 Environmental Management system certification, OHSAS18001 Occupational Health management system certification and CE certificate. Company products all over the world, a large number of sales to Southeast Asia, Europe, Africa, and other countries and regions, and from these countries and regions of many customers to form a long-term stable relationship of cooperation. Realwin company has independent import and export rights.

In recent years, natural disasters occur frequently all over the world. Realwin has provided high-quality drainage and irrigation solutions for flood in Thailand, tsunami in Japan, agricultural irrigation in arid areas of African countries and other projects. Realwin has made significant contributions to flood control and disaster relief in Beijing and other major cities in China.

Realwin company production of various types of emergency drainage equipment, its main types are: Vehicle-borne large flow drainage emergency vehicle, pickup type drainage emergency vehicle , fixed type diesel engine self-priming pump unit, trailer-type mobile pump set , trailer type generator & drainage double-duty pump set, the whole intelligent diesel engine fire pump group, portable emergency pump, pump frequency conversion electric control cabinet and other products, and can customize according to customer's request processing.

Realwin company sincerely invites agents from all over the world to join us and cooperate, and is willing to work with you to create a win-win situation.

Development History



2024, our company became a high-quality supplier of **Saudi Arabian Drilling Company**
2022 Awarded the high **quality supplier** of Nanjing Port Machinery Heavy Industry Manufacturing Co., LTD
2021 Support henan WellHudonations! government emergency equipment **donations**

2020 Won the national high-tech enterprise certificate
2019 State flood control and disaster mitigation recommended brand
2018 Become the dongfeng cummins engine special fast repair point

2017 The winner of several national invention patent product
2014 Pump unit output reached 400 sets
2012 ISO9001 ISO14001 ISO18001
2011 Jiangsu ruiying production machinery manufacture co., ltd

2009 The preparation of 30000 square production base
2008 Diesel pump unit batch export overseas
2007 With independent generating sets export right
2006 Research and development production of diesel engine pump unit
2004 Won Cummins OEM supporting partner
2003 Shanghai Ruiying Machinery Manufacture Co., LTD (Generating set production and manufacturing)
2001 Shanghai Ruiying Electric Co., LTD (Generator set maintenance and service)

Honors and Qualifications

REALWIN[®]
MANUFACTURE



Ruiying products won several national patent technology, passed the ISO9001:2016 international quality management system certification, CE certification, passed the SGS certification, environmental management certification, occupation health certification, and won the award for the national famous quality products, in 2020 won the title of "national high and new technology enterprise", in 2022 won the provincial private technology enterprises, enjoys a high reputation in the industry.

Patent for invention and the software works: more than 270 in total



Productive Capacity

 **30000 m² of factory area Provincial high-tech enterprises**

- Modern standard workshop
- Adopt first-class professional sheet metal processing equipment
- Perfect CRM inventory management system





P roductive Capacity

Digital management production and development base - emergency rescue drainage equipment

The company has a first-class product research and development team and supporting professional production and processing equipment, using Solidworks, UG three-dimensional structure digital model design, fully adopting the engineering and technical standards and national standards specified by the supporting main engine factory.



REALWIN[®]
MANUFACTURE



S ervice System

As a pioneer in the manufacture of emergency drainage pump equipment, Realwin enjoys a worldwide reputation and is trusted by users.

To provide customers with easier to operate products and more convenient services.

Realwin offers flexible training and remote technical support to international customers.



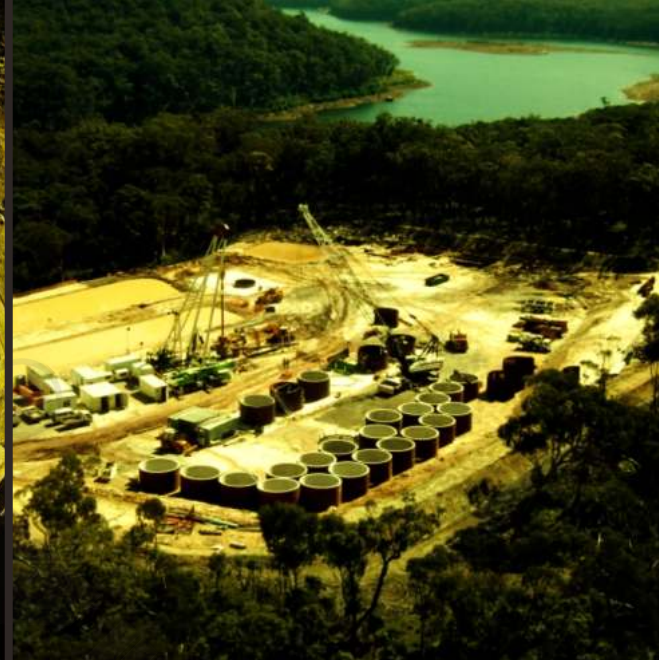
Professional and fast technical, spare parts and after-sales service support.

24-hour global service hotline:
400 800 2871
+86 13917570706

E-mail: ruiying@cnriyi.net

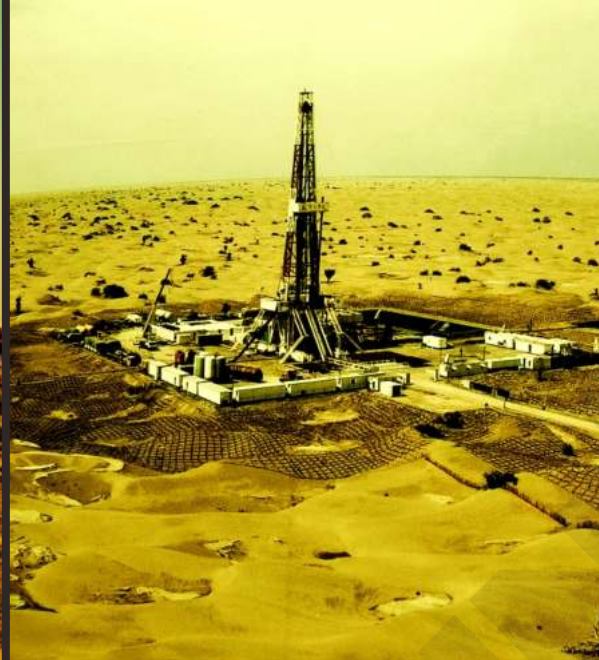
After the installation and commissioning of the equipment qualified 12 months or accumulated work within 1000 hours (whichever is the first) enjoy free warranty service.





REALWIN[®]
MANUFACTURE
Series Case





Diesel Pumps series





Suitable for any industry

Drainage solution in case of no electricity power for applications in various industries.

Municipal drainage
Flood control and rescue
Water treatment
Chemical industry
Mining industry
Manufacturing
Subways, tunnels, culverts
Well-points dewatering
Oil field
Agricultural irrigation
Fire remote water supply
Fire rescue

Overview of the main benefits of the pump set

Ambient temperature -20°C ~ 55°C ; The altitude is within 5000 meters.
Unit flow range 100 ~ 7200 m^3/h ; 27-2000 L/s.
The head range of the unit is 5 ~ 40m, the caliber range: DN75 ~ DN800 .
Trailer type, fixed type unit, can be used outdoors all weather.
Stable performance, cost-effective, economical to use, easy to maintain.
It can be connected to an external large fuel tank to easily achieve 24-hour continuous operation.
PLC automatic control, unit drainage operation is easy and safe, easy to install and debug.
Easy to move, can meet the application needs of different environments and different occasions.
The stationary type can realize the linkage drainage function of multiple units.
It can realize automatic high water drainage function.
It can be applied to integrated fire drainage systems.



Our product series

Suitable for all kinds of emergency drainage conditions



SV series

Trailer type emergency sewage pump set

Flow rate range: 560m³/h~1100m³/h



PV series

Trailer type emergency drainage pump

Flow rate range: 450m³/h~2000m³/h



MV series

Trailer type multifunctional pump

Flow rate range: 500m³/h~2000m³/h



EV series

Emergency drainage vehicle

Flow rate range: 500m³/h~5000m³/h



E series

Permanent magnet frequency conversion submersible pump

Flow rate range: 100m³/h~1000m³/h



Product type

Design satisfactory models according to customer requirements



Total enclosed trailer type



Open trailer type



Semi-enclosed trailer type



Total enclosed fixed type



Open fixed type



Mobile vehicle type



Containerized type



AS series Automatic loading type drainage shelter

Flow rate range: 150m³/h~600m³/h



CS series Container drainage pump station

Flow rate range: 1500m³/h~7000m³/h



FR series Trailer type fire rescue pump set

Flow rate range: 240m³/h~3000m³/h



EX series Explosion-proof diesel pump unit

Flow rate range: 700m³/h~3000m³/h



560~1100m³/h

SV series

Trailer type emergency sewage pump set



Main features

■ More compact

Designed to accommodate narrow road areas. It is smaller, lighter and has many features that make it easy to transport.

■ More diverse

Modular design, split trailer chassis and pump set to meet a variety of application requirements.

■ More environmentally friendly

The use of non-road Stage IV emission engine, in line with national environmental requirements.

■ More durable

It is more competent for emergency work under harsh environmental conditions and has strong sewage pumping capacity.



Good-looking appearance

Adopt a fully enclosed silent enclosure, eagle wing door design, make the pump set more beautiful.



Parameter configuration

Model	Caliber	Flow rate m ³ /h	Head m	Suction head m	Engine power@Speed ≥KW@r/min	Trailer type
RY560SV	DN150	560	24	8.5	36@1500	Two-wheeled road trailer
RY600SV	DN150	600	33	8.5	36@1800	Two-wheeled road trailer
RY1000SV	DN200	1000	28	8.5	58@1500	Two-wheeled road trailer
RY1120SV	DN200	1120	40	8.5	117@2200	Two-wheeled road trailer
RY1100PV	DN250	1100	25	8.5	70@1500	Two-wheeled road trailer

Special specifications of flow, head, can be customized production.



450~2000m³/h

PV series

Emergency drainage pump set

vacuum assisted one-key start



Key features

- Diesel engine driven water pump set, suitable for field drainage operations without electricity;
- Integrated vacuum assist system, no need to fill the pump body with water. It can start draining quickly after starting;
- Highway trailer system, travel speed: 40~80km/h;
- Integrated chassis fuel tank, can last 8~10h running.

Diesel engine

- Equipped with high-quality engine and high-performance pump body, strong power, high torque, easy maintenance, easy start;
- A high-strength cardan coupling is adopted between the engine and the pump body to make the operation more stable;
- All movable devices are effectively fixed to further improve the shock absorption effect;
- The radiator and rotating parts of the unit are equipped with protective covers to avoid damage caused by direct contact between man and machine.

Pump

- Customized drainage functions for different flow and head requirements;
- With self-priming function, suction lift 6-8.5m;
- Pump body disassembly structure: easy to maintain and troubleshoot. Only ordinary tools are needed to quickly complete daily maintenance, saving time and effort;
- Open impeller structure, non-clogging design, strong passing performance;
- Easy to use, just put the suction tube deep below the liquid level to work (Fill with water for the first start).

Trailer

- Equipped with Australia-specific trailer chassis and torsion bridge structure; alloy steel rim, automobile vacuum tires;
- Equipped with vehicle control connectors, it can synchronize trailer brake, steering and taillight control when towing the trailer.



450~2000m³/h

PV series

Emergency drainage pump set

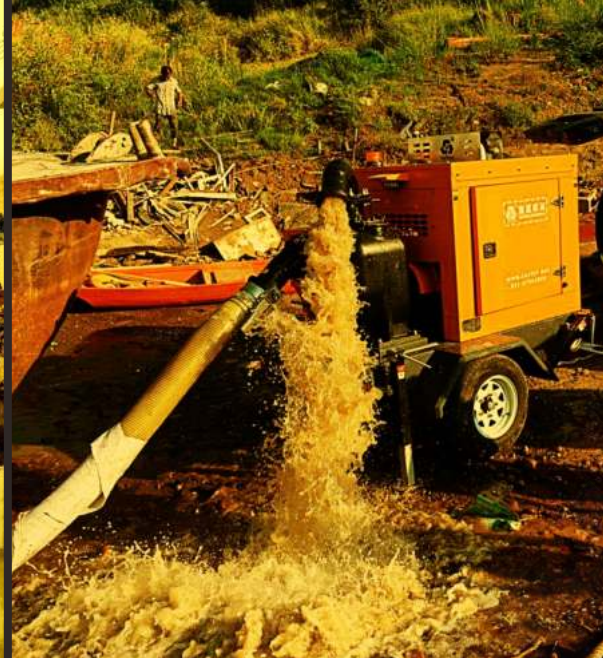
vacuum assisted one-key start



Parameter configuration

Model	Flow rate m³/h	Head m	Suction head m	Engine power ≥KW	Trailer type
RY450PV	150~450	25~8	6~8.5	29	Two-wheeled road trailer
RY700PV	300~700	30~10	6~8.5	38	Two-wheeled road trailer
RY1200PV	288~1200	30~15	6~8.5	50	Two-wheeled road trailer
RY1500PV	400~1500	20~10	6~8.5	95	Two-wheeled road trailer
RY2000PV	1800~2000	20~10	6~8.5	163	Two-wheeled road trailer

Special specifications of flow, head , can be customized production.



REALWIN[®]
MANUFACTURE

500~2000m³/h

MVseries

(Drainage, Power generation, Lighting)

Trailer type multifunctional drainage pump set

Inverter electric submersible pump



Description of unit performance

- Trailer-type diesel generator set, equipped with frequency conversion submersible pump in the enclosure, to realize the field power generation and drainage work;
- The flow rate of a single submersible pump is 130~1000m³/h, and the head: 8~55m;
- Special pump body structure design, the weight of each submersible pump is less than 35kg, can be easily lifted by a single person;
- Single submersible pump power: 15-55KW;
- The submersible pump is equipped with a step-down frequency conversion starting cabinet, the displacement can be manually adjusted or automatically fixed, and has a precision leakage protection device;
- The submersible pump adopts dry composite motor, and the impeller is made of 304 stainless steel, which is integrated and anti-corrosion and wear-resistant;
- The submersible pump is equipped with a 30-meter submersible cable, integrated with the pump and with a steel cable sheath with a length greater than 100mm;
- The connection of the cable adopts IP67 industrial waterproof quick connection;
- The submersible pump can choose two modes: mobile diesel generator or mains drive;
- Equipped with a special floating ring to avoid the bottom of the submersible pump;
- Each submersible pump is equipped with a 40m drainage hose. The length can be configured according to customer requirements;
- Lifting lighting: The top of the box is equipped with LED lifting lights, can manual and wireless remote control, up to 1.8m, wide irradiation range, suitable for night drainage operations.



500~2000m³/h

MVseries

(Drainage,Power generation, Lighting)

Trailer type multifunctional drainage pump set

Inverter electric submersible pump



The number of portable submersible pumps can be freely combined according to flow rate and head.

Parameter configuration					
Model	Flow rate m³/h	Head m	Number of submersible pumps	Genset power KW	Optional configuration
RY500MV	500	10	1set	25	1, Inverted horizontal curved arm lifting light 2, Vehicle surveillance camera
RY1000MV	1000	10	2sets	50	
RY1500MV	1500	10	3sets	80	
RY2000MV	2000	10	4sets	100	
Special specifications of flow, head , can be customized production.					



500~1000m³/h (China VI)

EVseries

8~30m
Pickup drainage rescue vehicle

Optional configuration

RY500EV



Vehicle inside view



Product description

- Pickup drainage rescue truck is the ideal best solution for field drainage without electricity, super large drainage flow, widely used in field engineering, agricultural irrigation, flood prevention and drainage, emergency firefighting, etc.
- High-efficiency and energy-saving portable submersible pump body, dry composite motor, wear-resistant and corrosion-resistant stainless steel impeller, integrated molding, anti-corrosion and wear-resistant, stable performance and reliable use.
- One-button start-stop operation control system, with diesel engine self-protection (low oil pressure, high water temperature, over speed) function.
- Reliable and stable grounding type, equipped with leakage protection device.

Pickup truck parameters

Models	4WD diesel version pickup	
Chassis wheelbase	mm	3406
Chassis power	kW	105
Number of permitted passengers		2+3
Max speed	km/h	140

Standard configuration

Items	Configuration instruction	Quantity
Vehicle chassis	Four-wheel drive diesel version, national six emissions	1set
Diesel generating set	Power:25~35KW Voltage:380/220V	1set
Portable submersible pump	Flow:500m³/h Head:10m Power:22KW	1set
Cable	Submersible grade cable	30m
Control system	Liquid crystal intelligent control system	1set
Water pump starting cabinet	Frequency conversion starting cabinet, control flow rate	1set
Battery	Maintenance-free type (including battery switch)	1set
Lamp	Top searchlight	1set
Ancillary accessories	Drain-pipe:20m Floating body Rope:20m	1set
Pipe support (Ruiying patent)	Detachable Steel structural support for Wellhead drainage belt	1set
Registration information	Vehicle qualification certificate, environmental protection certification, licensing invoice	1set
Documents	Operation manual, certificate of qualification, warranty card	1set



REALWIN[®]
MANUFACTURE



500~5000m³/h (China VI)

EVseries

8~45m Truck-mounted pump system

Large flow drainage rescue vehicle Pioneer of urban emergency flood control

Optional configuration



Vehicle inside view



Description of unit performance

- Large flow drainage rescue vehicle is the best ideal solution for field without power drainage , super large drainage flow, widely used in field engineering, agricultural irrigation, flood prevention and drainage, emergency firefighting, etc.
- High-efficiency and energy-saving portable submersible pump body, dry composite motor, wear-resistant and corrosion-resistant stainless steel impeller, integrated molding, anti-corrosion and wear-resistant, stable performance and reliable use.
- One-button start-stop operation control system, with diesel engine self-protection (low oil pressure, high water temperature, over speed) function.
- Reliable and stable grounding mode, equipped with leakage protection device.
- The central control lounge has a large space and a telescopic staircase designed to meet the humanized needs of the unit during use.

Unit parameters

Vehicle Model		Large flow drainage rescue vehicle	Small and medium-sized drainage rescue vehicles (license plate is available)
Flow range	m³/h	1500~5000	500~1200
Head range	m	8~45	8~45
Generator set power	kW	150~200	50
Max speed	km/h	≥89	≥100
Passengers number allowed in the cab		≥3	≥3
Vehicle emission standards		China VI	China VI

Model recommendation:

RY500EV	RY1000EV	RY1500EV
RY2000EV	RY3000EV	RY3500EV
RY4000EV	RY4500EV	RY5000EV

Optional configuration refer to the pickup series



100~1000m³/h

Eseries

(Small size, Light weight, large flow)

Permanent magnet frequency conversion submersible pump

Simple, safe and effective operation

Frequency conversion control cabinet performance description

- Control cabinet protection grade: IP55, provide good safety in harsh environments;
- Top mounted telescopic rod, installed at the bottom of the pulley, can quickly transfer;
- Pump control system integrated in the control cabinet, control cabinet below 16 kg weight, can work properly within 0-500m from the generator;
- Control cabinet and pump can use the two modes of diesel generators or mains (380 v / 400 v) drive.

Characteristics of submersible pump products

- Small size, light weight, simple to use;
- Wide range of application, suitable for emergency rescue work in various environments;
- The flow rate and head size can be adjusted.





Parameter configuration of submersible pump



RY-E400-8
Light Portable submersible pump

outlet size (mm)	200
flow rate range (m³/h)	300~400
head range (m)	7~12
motor power (kW)	15
net weight (kg)	≤23



RY-E500-10
Light Portable submersible pump

outlet size (mm)	200
flow rate range (m³/h)	500~600
head range (m)	7~11
motor power (kW)	22
net weight (kg)	≤32



RY-2E600-8
Ultra-light portable submersible pump

outlet size (mm)	200
flow rate range (m³/h)	500~600
head range (m)	8~10
motor power (kW)	22
net weight (kg)	≤24



RY-E150-35
High head submersible pump

outlet size (mm)	150
flow rate range (m³/h)	100~200
head range (m)	50~25
motor power (kW)	22
net weight (kg)	≤30



RY-E1000-10
Large flow submersible pump

outlet size (mm)	250~300
flow rate range (m³/h)	800~1000
head range (m)	12~8
motor power (kW)	45
net weight (kg)	≤80



RY-EJ500-10
Portable cross-flow relay pump

outlet size (mm)	150~200
flow rate range (m³/h)	150~500
head range (m)	35~10
motor power (kW)	22
net weight (kg)	≤50

150~600m³/h

ASseries

(Drainage, Lighting,Power generation)

Automatic loading type drainage shelter



Unit performance description

- With the electric loading and unloading system, single person can independent operation equipment loading and unloading from the car, without other auxiliary tools such as crane or forklift;
- A key remote elevator, elevator has the system since the balance in the process of detection, and alarm protection function,
- All LCD touch screen control, can display four supporting leg lift height and balance;
- Loading/unloading time < 180 seconds;
- Applicable models: pickup truck or minivan;
- Power > 18 kw.

According to the flow, head requirements of free combination of portable submersible pump number

Parameter Configuration

Model	Flow (m³/h)	Head (m)	Generation power (kw)	Lifting light
RY150AS	150	20	18	2*150W LED
RY400AS	400	8	18	2*150W LED
RY500AS	500	7	18	2*150W LED

Special specifications of flow, head , can be customized production.

Emergency drainage shelter

Automatic loading type



1500~7000m³/h

CS series

Open a new mode of intelligent power generation + drainage
Container drainage pump station



Parameter Configuration					
Model	Flow (m³/h)	Head (m)	Genset power (KW)	Working mode	Container
RY1500CS	1500	10~25	≥ 75	Manual/Automatic	non-standard
RY2000CS	2000	10~25	≥ 100	Manual/Automatic	
RY3000CS	3000	10~25	≥ 120	Manual/Automatic	
RY4000CS	4000	10~25	≥ 150	Manual/Automatic	
RY5000CS	5000	10~25	≥ 180	Manual/Automatic	
RY6000CS	6000	10~25	≥ 200	Manual/Automatic	
RY7000CS	7000	10~25	≥ 220	Manual/Automatic	
Special specifications of flow, head , can be customized production.					

Application range

Container drainage pump system new generation of new concept emergency rescue materials storage equipment, generally used for urban inland river sluice emergency drainage, in the construction application can timely and effectively eliminate the hidden danger of river water (seawater) rise, prevent river backflow, in a short time can effectively control the emergency site danger, to avoid the deterioration and escalation of the disaster.

The one-stop solution of container drainage system is the trend of emergency rescue development in the future.



REALWIN[®]
MANUFACTURE



240~3000m³/h

FR series

Trailer type fire rescue pump set

Provide one-stop solutions for fire remote water supply and emergency rescue



Scope of application of the unit

- Remote water supply for fire fighting;
- Fire emergency rescue and disaster relief;
- Emergency dispatch of water conservancy pumping station;
- Surprise urban flood control and drainage, drought resistance, etc.

Introduction to unit performance

- The engine is selected from Cummins, a Sino-US joint venture, which is durable and stable in performance;
- The transmission adopts universal joint connection, which has small vibration, stable performance and long service life;
- Double chassis trailer, double shock absorption, stable driving, 180° turning without dead angles, electronic brakes and crash brakes to ensure driving safety;
- A gear clutch gearbox is installed between the diesel engine and the rotary lobe pump, and an electronic clutch switch is installed to ensure that the diesel engine is not loaded to start and stop idle delay;
- With forward and reverse function, it can be realized only by the rotary switch on the control cabinet, which is convenient and quick to operate;
- Double rainproof function, diesel engine with rainproof box, the whole machine with rainproof roof, side with canvas cover.

Unit specification range

Model	Flow (m ³ /h)	Head (m)	Suction head (m)	Engine power (KW)	Trailer type
RY500FR	240~350	20~40	7.5~8.5	36~70	Two-wheel road trailer
RY1000FR	800~1000	20~40	7.5~8.5	70~170	Four-wheel road trailer
RY1500FR	1200~1500	20~40	7.5~8.5	120~230	Four-wheel road trailer
RY2000FR	1800~2000	20~40	7.5~8.5	230~300	Four-wheel road trailer
RY3000FR	2500~3000	20~40	7.5~8.5	350~400	Four-wheel road trailer

Special specifications of flow, head , can be customized production.



More fire rescue pump units



REALWIN[®]
MANUFACTURE



700~3000m³/h

EXseries

Explosion-proof level: Ex II2GIIA T4

Explosion-proof diesel pump unit

Mining area/chemical explosion-proof emergency pump station / pressure pump station



Parameter Configuration

Model	Flow (m ³ /h)	Head (m)	Engine power (KW)	Container
RY700EX	700	20	70	non-standard
RY1000EX	1000	20	90	
RY1500EX	1500	18	132	
RY2000EX	2000	18	160	
RY2500EX	2500	15	230	
RY3000EX	3000	15	260	

Special specifications of flow, head, can be customized production.

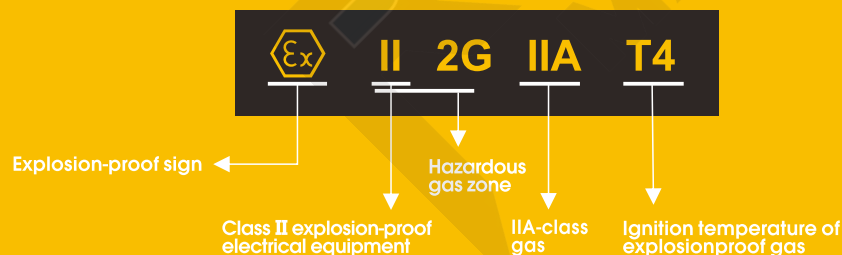
Unit description

The explosion-proof grade of the engine reaches the mine explosion-proof grade EXIBT42G.

The whole machine strictly in accordance with GB3836, GB12476 and GB20800 related explosion-proof standards design, manu-facturing, production, inspection, protection of explosion-proof safety.

According to different needs, the engine suitable for dangerous gases 1 area, dangerous gas2 area, dangerous dust 21 area, dangerous dust 22 area, explosion-proof diesel or gas powder composite places are optional.

Explosion-proof instruction:



Ignition temperature specification

T1 : 450°C< t
T2 : 300°C< t ≤ 450°C
T3 : 200°C< t ≤ 300°C
T4 : 135°C< t ≤ 200°C
T5 : 100°C< t ≤ 135°C
T6 : 85°C< t ≤ 100°C



Features of trailer-type units

Safe and reliable

Easy to obtain drainage output

Has all the advantages of silent type unit.

Suitable for field work.

The wheeled chassis has a towing device that adjusts the balance of the vehicle at any time.

Equipped with alarm lights, side lights, anti-fog lights, etc, in line with transportation safety standards.

Single- or dual-axle trailers are available, with mechanical or automatic braking options to meet a wide range of requirements.

Convenient refueling system with lockable filler ports.

Excellent safety performance

■ Safe to control

The radiator and rotating parts of the unit are equipped with protective covers to avoid damage caused by direct contact between man and machine.

The control panel is equipped with a door lock and an emergency stop switch, and the emergency stop device is installed outside the box for easy use in an emergency.

■ High-quality sound-dampening materials and design

The inner wall of the unit adopts a new special 50mm flame retardant silencer cotton, and the sealing plastic is used around the door, which can absorb and block a large amount of noise and heat emitted by the unit during operation.

Easy to operate

■ Convenient refueling and watering device

Built-in bottom fuel tank;

Externally equipped with a filler port;

Fuel discharge port of the base;

Water filler above the enclosure.

■ Quick connect pipeline connection device

With quick couplings, the work of piping connection is easier and faster.

■ Simpler maintenance

All routine maintenance work can be operated on both sides of the unit, and wide access doors give you access to all parts of the unit.

Excellent chassis performance

■ Traction bar

Highway version traction bar

Off-highway version of the traction bar

■ Safety chains

Install safety chains on all towing units

■ Security

The safety brake wire rope is connected to the main vehicle to ensure that the trailer can brake reliably in the event of accidental decoupling.

■ Driving brakes

Highway version: In driving, automatic braking can be realized according to the tractor;

Off-highway version: In driving, there is no driving brake.

■ Parking brakes

No brake below 0.75T, mechanical parking and wheel gear are configured above 0.75T;

The brake device generally ensures reliable braking in the up and down directions of a 10° slope.

■ Pass competence

The chassis is > 250mm above the ground

The angle of the front and rear wheel attachments and their tangent plane to the ground > 18°



Single axle towing chassis



Double axle towing chassis

Product package

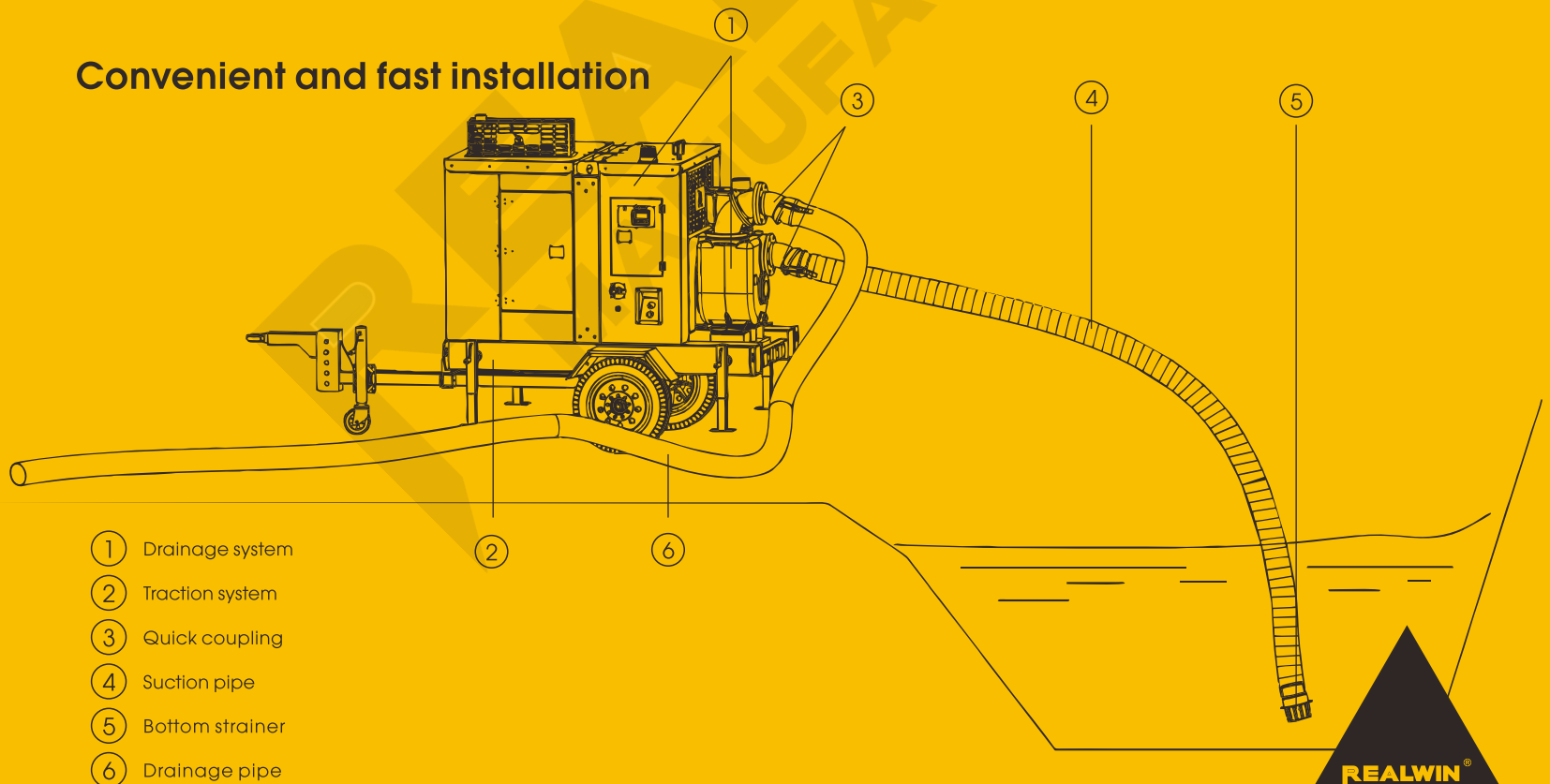
Provide you with drainage system special supporting product package, can guarantee the drainage work immediately.

Conventional product package



The above are conventional accessories, which are equipped differently according to different equipment types. The purchase contract shall prevail.

Convenient and fast installation



REALWIN[®]
MANUFACTURE



4 0 0 8 0 0 2 8 7 1
+86 13917570706 +86 25-56231571
Jiangsu Ruiying Machinery Manufacture CO.,LTD
www.ruiyingpower.com

HEADQUARTERS : 601, Modern Communication Building, 201
Xinjinqiao Road, Pudong New Area, Shanghai, China

FACTORY : No. 8, Chaxing Road, Baima High tech Industrial Park,
Lishui District, Nanjing, Jiangsu, China

2024 edition